

ASAHI GLASS CO.,LTD. KANSAI PLANT AMAGASAKI FACTORY

2 NISHIMUKOJIMA-CHO AMAGASAKI-SHI HYOGO JAPAN

THE FOLLOWING SAMPLE(S) WAS/WERE SUBMITTED AND IDENTIFIED BY/ON BEHALF OF THE CLIENT AS:

以下のサンプルは顧客により提供され、顧客に代わって確認を行いました:

SAMPLE DESCRIPTION : Float Glass substrate(ELG20130712-1)

CLIENT REF.NO : ELG20130712-1

SAMPLE RECEIVED : 2013/07/18

TESTING DATE : 2013/07/18 TO 2013/07/29

---

**TEST REQUESTED** : SELECTED TEST(S) AS REQUESTED BY CLIENT.  
**分析項目** : 分析項目は顧客の要求によります。**TEST METHOD(S)** : WITH REFERENCE TO IEC62321 EDITION 1.0 2008-12 FOR RoHS 6 SUBSTANCES.  
**分析方法** : OTHER CHEMICALS WERE TESTED BY EACH APPROPRIATE METHOD.  
RoHS6物質の分析はIEC62321第1.0版(2008年12月)を参照しました。  
それ以外の化学物質についてはそれぞれに最適な方法で分析を行いました。**TEST RESULT(S)** : PLEASE REFER TO THE NEXT PAGE(S).  
**分析結果** : 以下のページをご参照願います。

大内 幸弘



Yukihiro Ouchi / Quality Manager  
SGS Japan Inc., Chemical Laboratory



## TEST REPORT

REPORT NO. JP/2013/070794

DATE: July 30, 2013

PAGE: 2 OF 4

ASAHI GLASS CO.,LTD. KANSAI PLANT AMAGASAKI FACTORY

2 NISHIMUKOJIMA-CHO AMAGASAKI-SHI HYOGO JAPAN

### TEST RESULT(S)

ITEM(S)	UNIT	RESULT	METHOD	INST./PLACE	MDL
CADMIUM(Cd)	mg/kg	N.D.	IEC62321 ED.1 SECTION 8,9,10	ICP-OES	2
LEAD(Pb)	mg/kg	N.D.	IEC62321 ED.1 SECTION 8,9,10	ICP-OES	2
MERCURY(Hg)	mg/kg	N.D.	IEC62321 ED.1 SECTION 7	ICP-OES	2
CHROMIUM VI(Cr(VI))	mg/kg	N.D.	IEC62321 ED.1 ANNEX C	UV/VIS	2
<b>Polybrominated biphenyls(PBBs)</b>					
Monobromobiphenyl	mg/kg	N.D.			5
Dibromobiphenyl	mg/kg	N.D.			5
Tribromobiphenyl	mg/kg	N.D.			5
Tetrabromobiphenyl	mg/kg	N.D.			5
Pentabromobiphenyl	mg/kg	N.D.	IEC62321 ED.1 ANNEX A	GC/MS	5
Hexabromobiphenyl	mg/kg	N.D.			5
Heptabromobiphenyl	mg/kg	N.D.			5
Octabromobiphenyl	mg/kg	N.D.			5
Nonabromobiphenyl	mg/kg	N.D.			5
Decabromobiphenyl	mg/kg	N.D.			5
<b>Polybrominated diphenyl ethers(PBDEs)</b>					
Monobromodiphenyl ether	mg/kg	N.D.			5
Dibromodiphenyl ether	mg/kg	N.D.			5
Tribromodiphenyl ether	mg/kg	N.D.			5
Tetrabromodiphenyl ether	mg/kg	N.D.			5
Pentabromodiphenyl ether	mg/kg	N.D.	IEC62321 ED.1 ANNEX A	GC/MS	5
Hexabromodiphenyl ether	mg/kg	N.D.			5
Heptabromodiphenyl ether	mg/kg	N.D.			5
Octabromodiphenyl ether	mg/kg	N.D.			5
Nonabromodiphenyl ether	mg/kg	N.D.			5
Decabromodiphenyl ether	mg/kg	N.D.			5

NOTES: mg/kg = ppm, N.D. = Not Detected, INST. = INSTRUMENT, MDL = Method Detection Limit

This Test Report is issued by the Company under its General Conditions of Service printed overleaf or available on request and accessible at <http://www.sgs.com>. Attention is drawn to the limitation of liability, indemnification and jurisdiction issues defined therein. Unless otherwise stated the results shown in this Test Report refer only to the sample(s) tested. This Test Report cannot be reproduced except, in full, without prior approval of the Company. Any unauthorized alteration, forgery or falsification of the content or appearance of this test report is unlawful and offenders may be prosecuted to the fullest extent of the law.

JP

この検査報告書は裏面に記載された、もしくは<http://www.sgs.com>で入手可能なサービスに関する一般的条件に則して発行されます。そちらに明記されている弊社の負うべき債務・補償の範囲及び司法管轄の項目をご注意ください。他に特に明記のない限り、この検査報告書に記載された結果は、検査した試料のみに属します。この書面全体の複製以外には、弊社からの事前の許可を得ること無く複製することを禁じます。この検査報告書を無断で変更、偽造、改ざんすることは違法であり、違反者に対しては法的手段を講ずることとなります。

ASAHI GLASS CO.,LTD. KANSAI PLANT AMAGASAKI FACTORY

2 NISHIMUKOJIMA-CHO AMAGASAKI-SHI HYOGO JAPAN

### 分析フローチャート MEASUREMENT FLOW CHART

1)酸分解前処理において試料を完全分解しています。

The sample was dissolved/ decomposed totally by acid pre-conditioning method according to below flow chart.

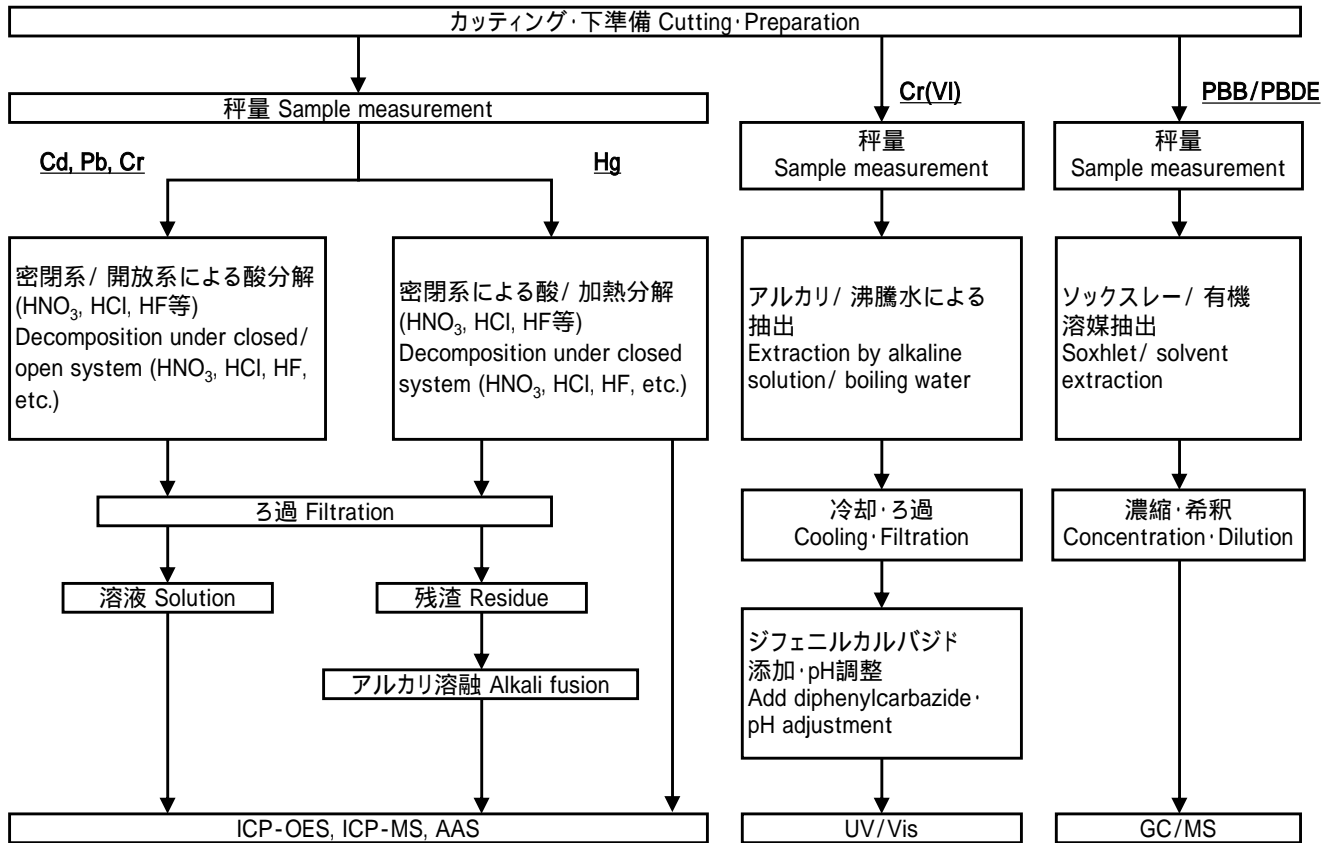
2)Cd, Pb, Hg, Cr, Cr(VI)

分析担当者 Name of the person in charge of measurement: 野田 晴美 Harumi Noda

3)PBB/PBDE

分析担当者 Name of the person in charge of measurement: 大谷 真由美 Mayumi Otani

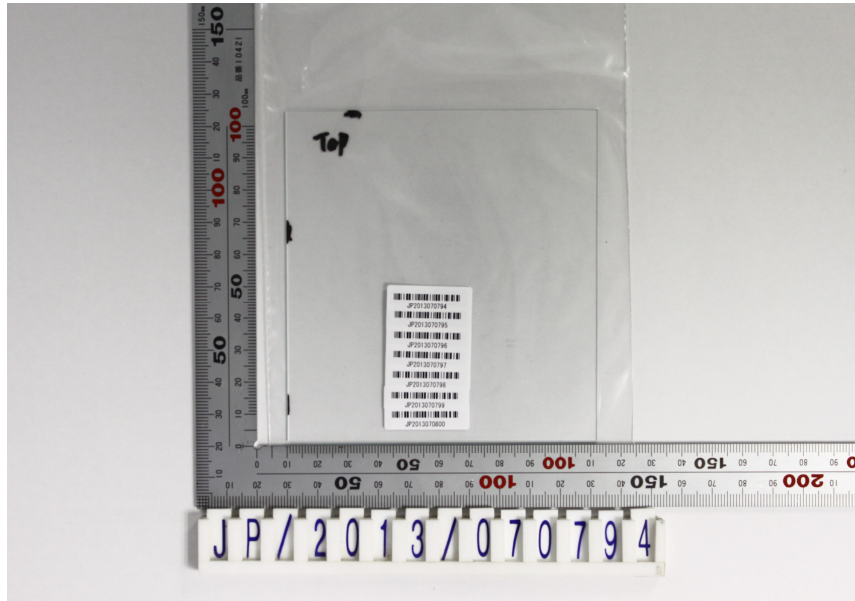
4)分析責任者 Name of the person responsible for measurement: 大谷 真由美 Mayumi Otani



ASAHI GLASS CO.,LTD. KANSAI PLANT AMAGASAKI FACTORY

2 NISHIMUKOJIMA-CHO AMAGASAKI-SHI HYOGO JAPAN

### SAMPLE IMAGE



&lt;END&gt;

This Test Report is issued by the Company under its General Conditions of Service printed overleaf or available on request and accessible at <http://www.sgs.com>. Attention is drawn to the limitation of liability, indemnification and jurisdiction issues defined therein. Unless otherwise stated the results shown in this Test Report refer only to the sample(s) tested. This Test Report cannot be reproduced except, in full, without prior approval of the Company. Any unauthorized alteration, forgery or falsification of the content or appearance of this test report is unlawful and offenders may be prosecuted to the fullest extent of the law.

JP

この検査報告書は裏面に記載された、もしくは<http://www.sgs.com>で入手が可能なサービスに関する一般的条件に則して発行されます。そちらに明記されている弊社の負うべき債務・補償の範囲及び司法管轄の項目をご注意ください。他に特に明記のない限り、この検査報告書に記載された結果は、検査した試料のみに属します。この書面全体の複製以外には、弊社からの事前の許可を得ること無く複製することを禁じます。この検査報告書を無断で変更、偽造、改ざんすることは違法であり、違反者に対しては法的手段を講ずることとなります。